

ADDENDUM:

2

TODAY'S DATE:

06.26.24

PROJECT NAME: Central Office 600 Building Canopy

CONTACT / TITLE: Amy Kurtz

PROJECT MANAGER

PHONE / EMAIL: 206-574-1283

Amyk@kcha.org

This Addendum is used to Identify Items in the Original Documents with Action as Follows:

BID

RFQ

RFP

CLARIFY

CHANGE

DELETE

ADD

SUBSTITUTE

 3 **Page(s) Total for this Addenda including this page.**

CHANGE:

C1.0 Change "Site Plan" Concrete layout and finishes and "Detail A" to "Exhibit A" Attached

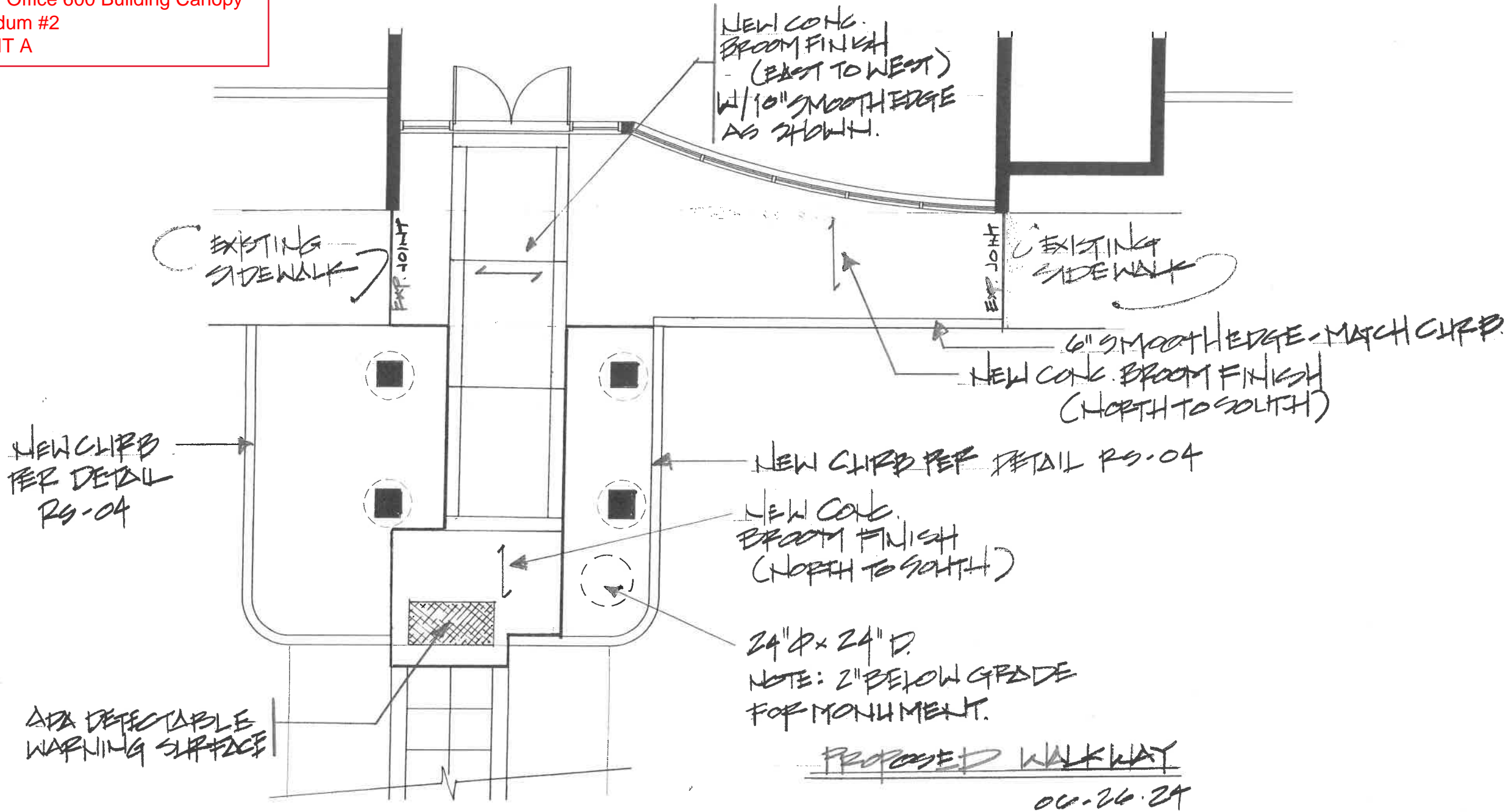
CLARIFY

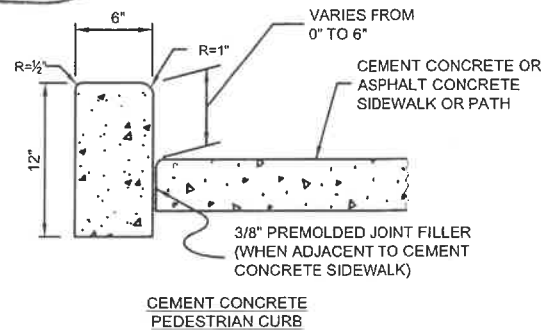
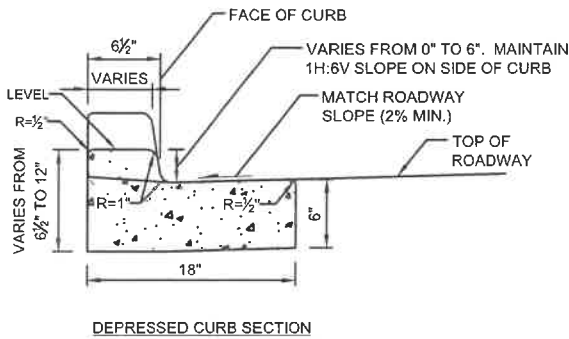
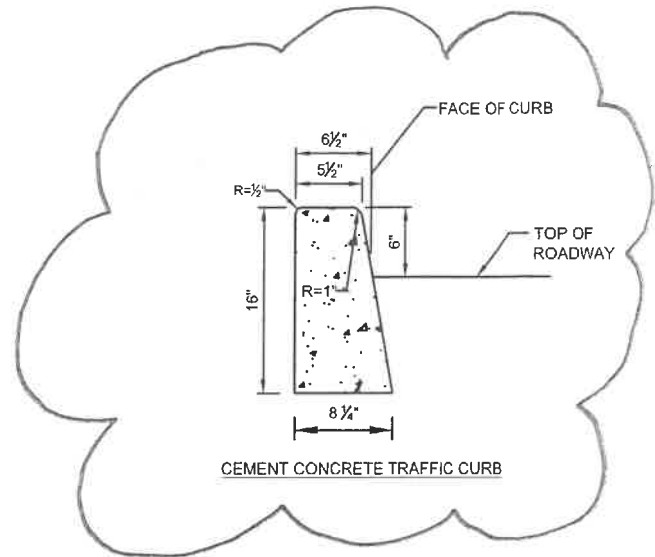
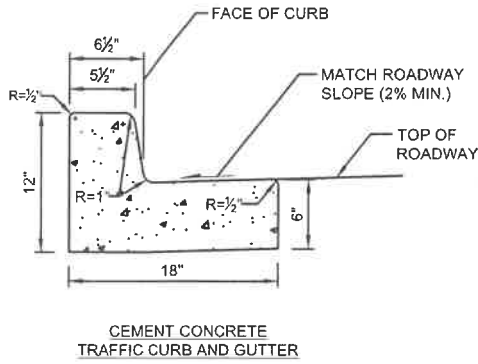
C1.0 - Site Plan notation "CONCRETE TRAFFIC CURB PER CITY OF TUKWILA STD. DETAIL RS-04" Refer to Exhibit B attached for reference.

Contractor will include the excavation of existing soils and asphalt to install proper formwork. Curbing will include (1) #5 horizontal rebar and #5 dowels at 48" o.c.
Refer to Scope of work Division 3- Concrete for bidding purposes.

END OF ADDENDA # 2

Central Office 600 Building Canopy
Addendum #2
EXHIBIT A





NOTES:

1. ALL CEMENT CONCRETE CURBS SHALL BE CONSTRUCTED WITH AIR ENTRAINED CONCRETE CLASS 3000 PSI CONFORMING TO WSDOT STD. SPEC. 6-02 EXCEPT AS SPECIFIED IN NOTE 2.
2. CEMENT CONCRETE CURB OR CURB AND GUTTER ALONG THE FULL WIDTH OF A DRIVEWAY ENTRANCE SHALL BE CONSTRUCTED WITH AIR ENTRAINED CONCRETE CLASS 4000 CONFORMING TO WSDOT STD. SPEC. 6-02.
3. CURB EXPANSION JOINT TO BE PLACED EVERY 15'.
4. REMOVAL/REPLACEMENT OF CEMENT CONCRETE CURB SHALL BE FROM EXPANSION JOINT TO EXPANSION JOINT UNLESS OTHERWISE DIRECTED BY THE ENGINEER.
5. FOR CURB AND GUTTER CATCH BASIN SURROUND SEE RS-15.

NOT TO SCALE



*City of
 Tukwila*

CEMENT CONCRETE CURB DETAIL

SHEET: **RS-04**

LAST REVISION: APRIL 2019

APPROVAL: H. PONNEKANTI